



HARDWARE GUIDE

Overview of Available Interactive
Kiosk Options





Join us at iHealthAssist as we revolutionize the self-service patient experience industry. Our patented AI Avatar Concierge has transformed the way patients and visitors interact with self-service technology. Such a game-changing patient experience deserves no less than cutting-edge display solutions.

There are two typical scenarios we experience when deploying the iHealthAssist™ solution powered by PRSONAS™ in enterprise environments.

- **Certified Hardware**

offered in partnership with



- **Client Provided Hardware**

for organizations that prefer to acquire and deploy their own hardware



Every iHealthAssist™ product represents a comprehensive solution comprising one of our interactive software packages combined with a hardware option of your preference. The versatility lies in your hands to select the perfect combination that best suits your needs.

1

OPTION

iHealthAssist™ software price

+

Meridian Certified Hardware

=

Total Purchase Price

OPTION

2

iHealthAssist™ software price

+

Client Provided Hardware

=

Total Purchase Price



These certified Meridian Kiosks are a line of integrated hardware systems creating a simple turn-key solution for deploying any of our iHealthAssist™ solutions. These devices usually consist of advanced computer and graphics processors, sensors, display devices, and a variety of proprietary and commercially available components.

Please review the technology device options and reach out to your Meridian account executive to discuss which device meets your patient's needs and experience goals.

The current product line consists of:

PRSONAS™ Presenza

Life-sized interactive experience tailored for bustling hospital environments



PRSONAS™ nOvate

Life-sized holographic interactive display for unmatched patient & visitor experience



PRSONAS™ Navigator

Interactive device leveraging state-of-the-art touch technologies, ideal for high-traffic hospitals



PRSONAS™ Navigator

Description: The Navigator kiosk delivers a sophisticated design with a larger display for easier reading of information in a space-saving form factor.

The PRSONAS™ Navigator integrates these certified components:

- Integrated High-Performance CPU/GPU
- Commercial floor stand
- 32" & 43" commercial touchscreen (portrait & landscape)
- Integrated camera & microphone
- Integrated premium audio
- Ethernet & WiFi
- ADA Complaint

Dimensions (43" unit):

Height: 58"

Width: 39"

Depth: 22"

Weight: -180 lbs

Pricing: starting from \$5,000

[For more information and specifications, please click here.](#)



Height: 6'

PRSONAS™ Presenza

Description: The Presenza's form and function are designed to provide effortless unattended self-service for patients and visitors.

The PRSONAS™ Presenza kiosk integrates these certified components:

- Integrated High-Performance CPU/GPU
- 43" & 55" interactive touchscreen display
- Integrated camera & microphone
- Integrated premium audio
- Ethernet & WiFi
- ADA Complaint

Dimensions (55" unit):

Height: 82.5"

Width: 33.5"

Depth: 6"

Weight: 450 lbs

Pricing: starting from \$7,800.

[For more information and specifications, please click here.](#)



Height: 6'

PRSONAS™ nOvate

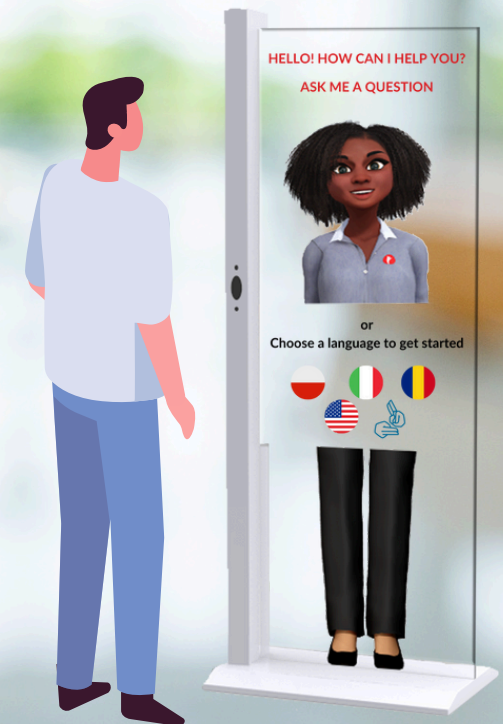
Description: In the hospital setting, the nOvate life-size hologram commands attention, creating an unforgettable first impression that few devices can match. If you aim to make the ultimate statement and enhance the patient experience, this is it!

The nOvate™ kiosk integrates these certified components:

- Integrated High-Performance CPU/GPU
- 55" look-through interactive touchscreen
- Patented & proprietary holographic projection
- Integrated camera & microphone
- Integrated premium audio
- Ethernet & WiFi

Pricing: starting from \$27,000

[For more information and specifications, please click here.](#)



Height: 6'





As the world leader in digital personalities, we also understand that enterprise partners often manage their hardware deployments, have their specific hardware requirements, or employ their contract support organizations. Please reference the following minimum recommended hardware specifications below for your specific hardware deployment:

- **Recent OS:** Updated version of Windows 10 or newer
- **Processor:** i7 Quad-Core, 1.6 gigahertz (GHz) or faster CPU processor
- **RAM:** 16 GB
- **Hard disk space:** 64 GB
- **Graphics card:** NVideo 3D GPU Accelerated or Equivalent
- **Display:** 1920x1080 touchscreen

PLEASE NOTE: We do not assume responsibility for your hardware components. It is essential to understand that the performance and compatibility of your hardware are crucial factors in utilizing our software effectively. We recommend ensuring that your hardware meets the necessary specifications outlined for optimal performance with our projects. Additionally, any issues or concerns related to hardware functionality or maintenance fall outside the scope of our support services. We encourage you to consult with your hardware provider or IT department to address any hardware-related inquiries or requirements..



 4 North Main, Suite 203
Franklinton, NC 27525


 910.490.3781


 www.iHealthAssist.com

 info@prsonas.com


Thank you for referring to the iHealthAssist™ hardware guide. We hope it has provided valuable insights into the hardware options for seamless integration with our software solutions. We're here to ensure the patient experience is as smooth and efficient as possible and we look forward to assisting you in achieving your healthcare objectives.



 312 South Pine St.
Aberdeen, NC 28315

 866-454-6757

 www.MeridianKiosks.com

 sales@mzero.com

CONTACT INFORMATION

Powered By
PRSONAS
Version 240301